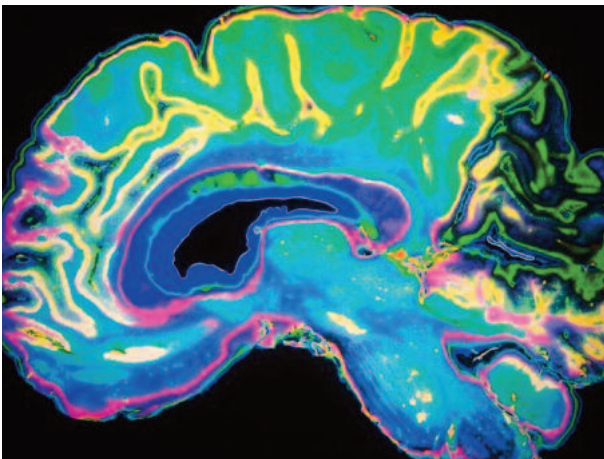


Certificate in the Principles of Dementia Care

Level 2

Course code: H02D2POD3P



Course Level

Level 2 Certificate

Course Length

Individualised but within 20 weeks

Attendance

Attendance is required at an induction session only. This can be delivered in the college or in the workplace. Completed workbooks can be returned to your assessor in person, by post or via email.

Entry Requirements

Learners must undertake an initial written assessment.

Awarding Body

NCFE

Location

Distance learning

Course Overview

This qualification aims to assist learners develop their knowledge and understanding of the principles of caring for those with dementia. It covers areas such as person centred care, the influence of positive communication methods, issues relating to their use of medication for those with dementia and the importance of providing appropriate activities. This qualification does not infer competence of the work role, but can be used to support the underpinning knowledge and understanding needed for those working in or towards a dementia care role.

Course Content

Unit 01 Dementia Awareness

Unit 02 The person centred approach to the care and support of the individual

Unit 03 Understand the factors that can influence communication and interaction with individuals who have dementia

Unit 04 Understand equality, diversity and inclusion in dementia care

Unit 05 Understand the administration of medication to individuals with dementia using a person centred approach

Unit 06 Understand behaviour in the context of dementia

Unit 07 Understand the benefits of engaging in activities in social care

Field Trips

N/A

Progression

N/A

Career Opportunities

The certificate will enhance the learners ability to apply increased knowledge of dementia awareness in a vocational setting.

Fees

Fee: £0

Exam/registration costs: £0

Learner pass: not required

Disclaimer: if you do not complete this qualification you will be required to pay a fee to cover the registration fee and cost of resources - £81

Please note that learners with disabilities or learning difficulties and/or disabilities may be exempt from some entry requirements. This will be decided on an individual basis and will be subject to suitable evidence and needs assessments. Admissions tutors will work with the Inclusive Support Team to ensure learners with additional support needs are given appropriate advice and guidance.

If you require any further information or if you wish to apply for this course, please email distancelearning@walsallcollege.ac.uk