



Slings

Issue date: February 2016

Topic: **Use of slings that have not been inspected/serviced**

Background/introduction

There may be times when a customer comes to access our service with their own sling. In most cases the sling (and hoist) will have been serviced/inspected as part of the contract when they were assessed and issued with the equipment.

However, there may be times when a customer brings in a sling that has not been serviced / inspected. The question then is can we use this sling? **Flow chart 1** on the following page should assist you in making your final decision.

What else do I need to do?

Before you use the sling, you will need to ensure that;

- the sling that has been brought in is the correct sling for the customer/client (e.g. they have not “borrowed” one from a friend or family member)?
- the sling does actually fit the customer/client? Have you measured it?
- a formal visual check (including ensuring its fit for purpose, there are no holes, tears, stitching issues etc) is carried out prior to its use,
- that a “test lift”¹ is carried out before the sling is bought into use. All the following points must be observed during the test lift

| Question | Yes | No |
|--|----------|--|
| Does the sling, when used with this hoist, fully support the patient? | Continue | Lower the Client and reposition the sling. Repeat test lift. If still no. Abandon test procedure |
| Does the spreader bar configuration allow the patient to be lifted comfortably? | Continue | Abandon test procedure |
| Is there sufficient head clearance? | Continue | Abandon test procedure |
| During the test lift did the hoist remain stable? | Continue | Abandon test procedure |

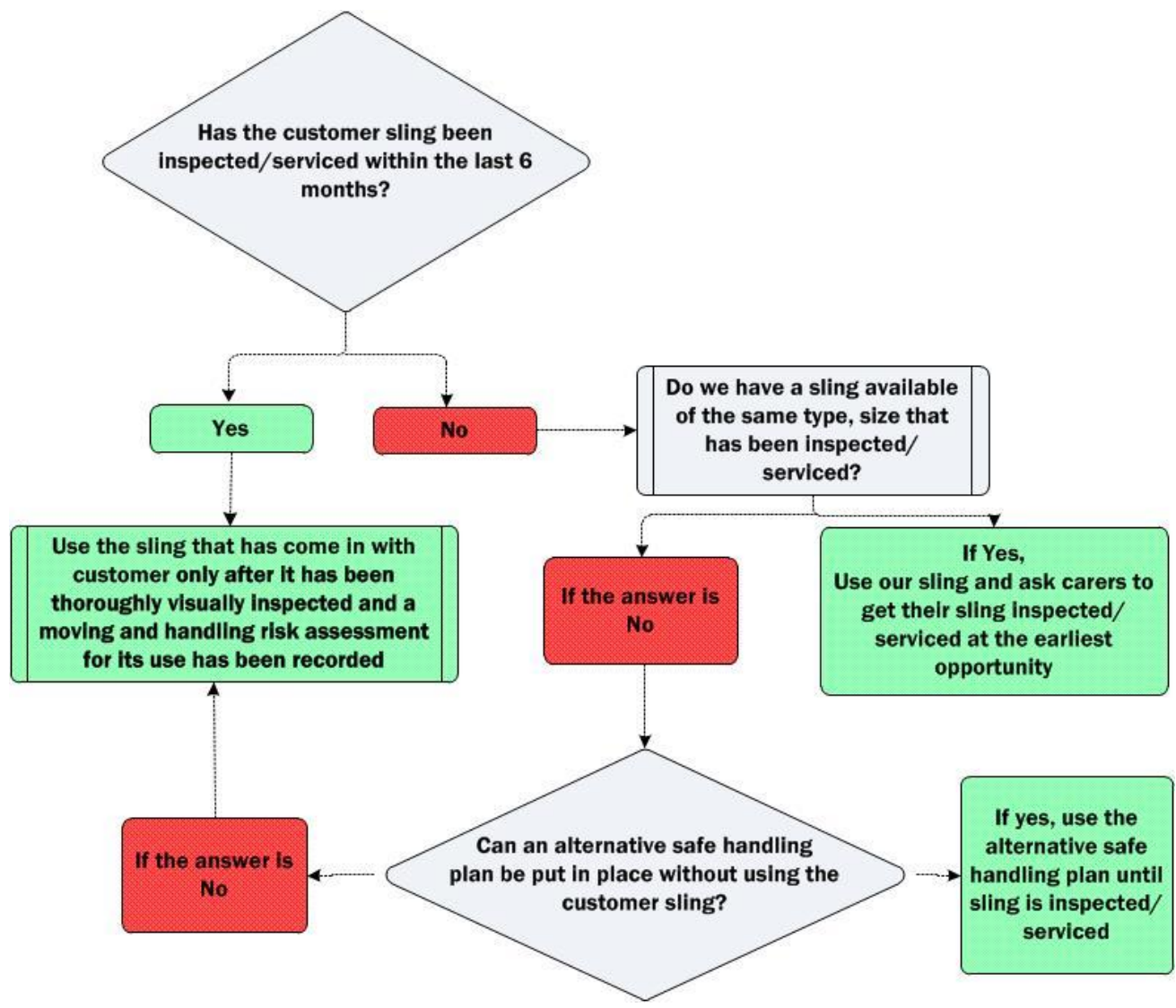
¹ When the sling is correctly and safely secured to the hoist, GENTLY raise the client from the surface they are on. Stop once tension is applied to the straps- check. Continue to lift FIVE CENTIMETRES ONLY in order to assess the client’s position in the sling.



Workforce Development - Social Care and Inclusion

Growing a world class workforce

Flow Chart 1



Additional information

If you require any further information please contact [Terry Hassall](#)